



[//projects/316999/images](#)

[/5417349/zoom](#)
© EUGENI PONS

[ADD TO COLLECTION](#)

The school unit is part of Montpellier's dynamic for development, the aim being to connect the city with the sea. The school is set on a small triangular plot of land, in keeping with the urban policy for densifying a new residential area.

The ground floor is taken up by the nursery school and the centre for before- and after-school activities. The primary school occupies the other two floors, with its playground on top of the nursery school. The volumes are designed as autonomous elements which appear to slide over each other, with their cantilevering providing covering for sections of the playground. Each volume is in a different colour or material. The bays have been designed according to their orientation and the level of light required.

Transit routes receive natural lighting from the patios and tall openings. The first-floor classrooms can be accessed directly from the playground, without having to pass through the rest of the building.



[//projects/316999/images](#)

[/5417352/zoom](#)
© EUGENI PONS

[ADD TO COLLECTION](#)

The classrooms are open at either end, and hence face both north and south. This produces ideal lighting conditions, as well as natural cooling by the passage of air through the classrooms from one end to the other.



[//projects/316999/images](#)



[//projects/316999/images](#)



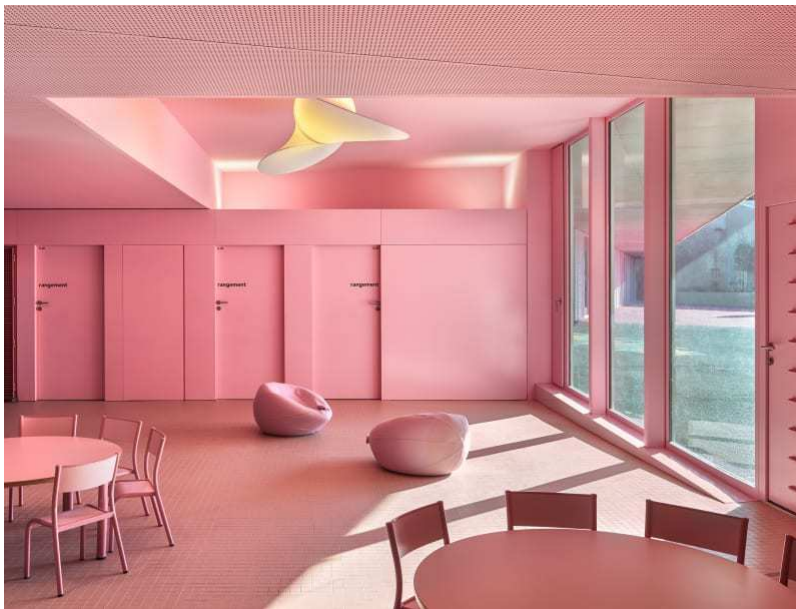
[//projects/316999/images](#)



[//projects/316999/images](#)



[//projects/316999/images](#)



[//projects/316999/images](#)

[/5417360/zoom](#)
© EUGENI PONS

[ADD TO COLLECTION](#)



[//projects/316999/images](#)

[/5417366/zoom](#)
© EUGENI PONS

[ADD TO COLLECTION](#)



[//projects/316999/images](#)

[/5417357/zoom](#)
© DOMINIQUE COULON & ASSOCIÉS

[ADD TO COLLECTION](#)



</projects/316999/images>

[/5417356/zoom](#)
© EUGENI PONS

[ADD TO COLLECTION](#)



</projects/316999/images>

[/5417351/zoom](#)
© EUGENI PONS

[ADD TO COLLECTION](#)



</projects/316999/images>

[/5417353/zoom](#)
© EUGENI PONS

[ADD TO COLLECTION](#)



(5417365/zoom)
© EUGENI PONS

[/projects/316999/images](#)

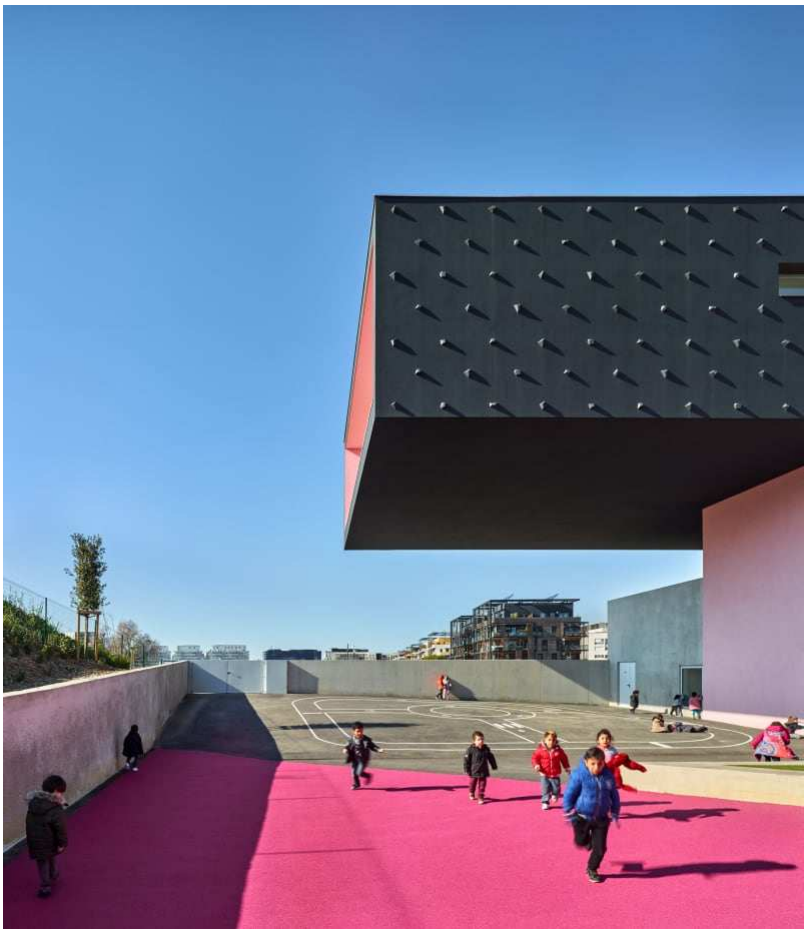
[ADD TO COLLECTION](#)



[/5417363/zoom](#)
© EUGENI PONS

[/projects/316999/images](#)

[ADD TO COLLECTION](#)



[/projects/316999/images](#)

[/5417362/zoom](#)
© EUGEN PONS

[ADD TO COLLECTION](#)



[/projects/316999/images](#)



[//projects/316999/images](#)

dominique
coulon
&
associés



north elevation



south elevation

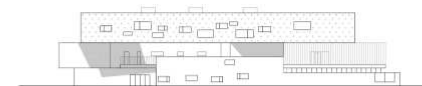


section

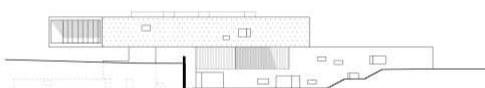
andré malraux group of schools in montpellier



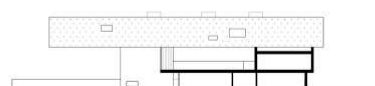
dominique
coulon
&
associés



west elevation



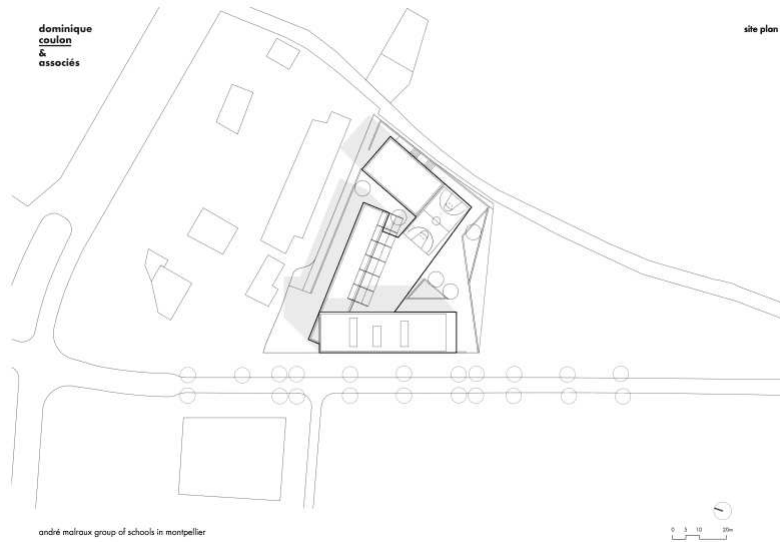
east elevation



section

andré malraux group of schools in montpellier

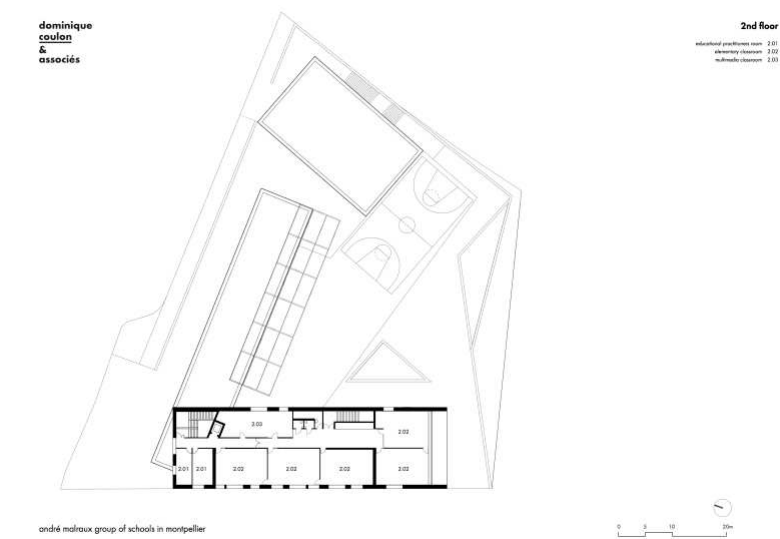




</projects/316999/images>

</5417369/zoom>
© DOMINIQUE COULON & ASSOCIÉS

[ADD TO COLLECTION](#)



</projects/316999/images>

</5417370/zoom>
© DOMINIQUE COULON & ASSOCIÉS

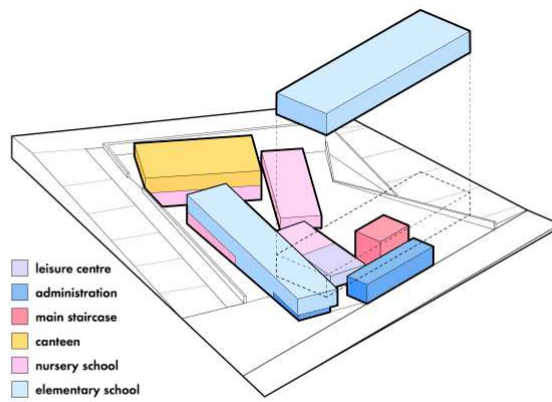
[ADD TO COLLECTION](#)



</projects/316999/images>

</5417371/zoom>
© DOMINIQUE COULON & ASSOCIÉS

[ADD TO COLLECTION](#)

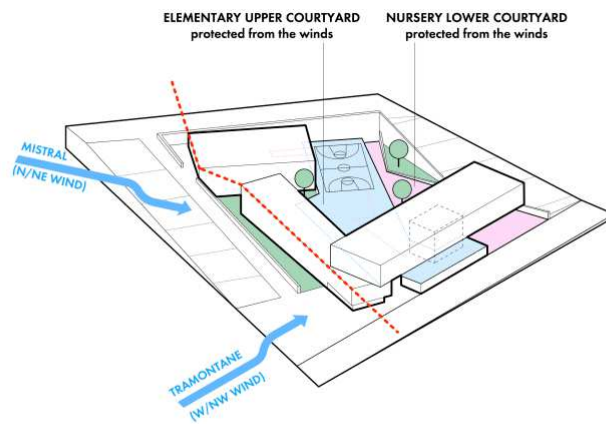


</projects/316999/images>

program

</5417375/zoom>
© DOMINIQUE COULON & ASSOCIÉS

[ADD TO COLLECTION](#)



</projects/316999/images>

the volumes placed in the north side protect children while playing in the courtyard

</5417376/zoom>
© DOMINIQUE COULON & ASSOCIÉS

[ADD TO COLLECTION](#)

PUBLISHED ON MAY 04, 2016

LOCATION
FRANCE - MONTPELLIER

DESIGNER
[DOMINIQUE COULON & ASSOCIÉS \(/AUTHORS/2144706109-DOMINIQUE-COULON-ASSOCIÉS\)](#)

PROJECT YEAR
2015

PHOTOS BY
[EUGENI PONS \(/AUTHORS/2144635104-EUGENI-PONS\)](#)

CREDITS

DESIGN
ARCHITECTS : DOMINIQUE COULON, STEVE LETHO DUCLOS

ARCHITECTS ASSISTANTS : FANNY LIÉNART, OLIVIER POULAT

CONSTRUCTION SITE SUPERVISION : STEVE LETHO DUCLOS, OLIVIER POULAT

LANDSCAPE
BRUNO KUBLER

STRUCTURES
BATISERF INGÉNIERIE

ACOUSTIC
EURO SOUND PROJECT

LIGHTING
BET G.JOST

MEP
SOLARES BAUEN

COST
E3 ÉCONOMIE

SAFE

BET G.JOST

SUSTAINABILITY
SOLARES BAUEN

CLIENT
VILLE DE MONTPELLIER

SUPPLIERS
CONSTRUCTION COMPANIES :
STRUCTURE, EARTHWORKS, SEWERAGE NETWORKS AND ROAD WORKS (BEC CONSTRUCTION), SPECIAL FOUNDATIONS, POLES (FRANKI FONDATIONS), METAL STRUCTURE (CIM MASSOL), WATER PROOFING ROOFING (SOPREMA), EXTERIOR JOINERY (MISTRAL FENÊTRES), EXTERIOR ISOLATION (ISO THERM HABITAT), METALWORKS (SERRURERIE DELMAS), EXTERIORWORKS (COLAS), GREEN AREAS (POUSSE CLANET), WOOD INTERIOR JOINERY (DUCROT), PLASTERING (SOCIÉTÉ FRONTIGNANAISE DE PLÂTRERIE), GLUED FLOORS (SPC), TILED FLOORS (ART ET TECHNIQUE DU BÂTIMENT), PAINTING (ENTREPRISE LANGUEDOC CHANTIER), ELEVATOR (CFA COMPAGNIE FRANÇAISE D'ASCENSEURS), ELECTRICITY (SPIE SUD OUEST), HEATING, VENTILATION, PLOMBING AND DRAINAGE (TEMPERIA).

PROJECT FACTS

INFO

- CLIENT VILLE DE MONTPELLIER
- PROGRAM NURSERY SCHOOL / ELEMENTARY SCHOOL / DAY NURSERY / DINNING ROOM
- ADDITIONAL NOTES 89 AVENUE JOAN MIRO 34 000 MONTPELLIER / LOCALISATION GPS : 43.602079, 3.907441

DATES

- COMPETITION MARCH 2012
- BUILDING OPENING SEPTEMBER 2015

DIMENSIONS

- AREA SURFACE 3444 SQM
- FLOOR NR 3
- BUILDING COST 7 300 000 €

ATLAS OF ARCHITECTURE

- [CANTILEVERS: DIALOGUES WITH GRAVITY \(HTTPS://DIVISARE.COM/CANTILEVERS-DIALOGUES-WITH-GRAVITY\)](https://divisare.com/cantilevers-dialogues-with-gravity)
- [CLASSROOMS \(HTTPS://DIVISARE.COM/CLASSROOMS\)](https://divisare.com/classrooms)
- [COLOURED INTERIORS \(HTTPS://DIVISARE.COM/COLOURED-INTERIORS\)](https://divisare.com/coloured-interiors)
- [COLOURS \(HTTPS://DIVISARE.COM/COLOURS\)](https://divisare.com/colours)
- [KINDERGARTENS AND PRE-SCHOOLS \(HTTPS://DIVISARE.COM/KINDERGARTENS-AND-PRE-SCHOOLS\)](https://divisare.com/kindergartens-and-pre-schools)
- [PLANS OF SCHOOLS \(HTTPS://DIVISARE.COM/PLANS-OF-SCHOOLS\)](https://divisare.com/plans-of-schools)
- [PLAYGROUNDS \(HTTPS://DIVISARE.COM/PLAYGROUNDS\)](https://divisare.com/playgrounds)
- [PRIMARY SCHOOLS \(HTTPS://DIVISARE.COM/PRIMARY-SCHOOLS\)](https://divisare.com/primary-schools)
- [THINK PINK \(HTTPS://DIVISARE.COM/PINK\)](https://divisare.com/pink)

PUBLISHED ON

DIVISARE HOMEPAGE

- [JANUARY 06, 2017 \(HTTP://DIVISARE.COM/HOMEPAGES/2017/1/5\)](http://divisare.com/homepages/2017/1/5)
- [JANUARY 02, 2017 \(HTTP://DIVISARE.COM/HOMEPAGES/2017/1/2\)](http://divisare.com/homepages/2017/1/2)

DIVISARE JOURNAL

- [MAY 21, 2016 \(HTTP://DIVISARE.COM/JOURNALS/82\)](http://divisare.com/journals/82)

DIVISARE BOOKS

[FULL CATALOGUE \(/BOOKS\)](#) [BOX SETS COLLECTION \(/BOOKS/DIVISARE/BOXSETS\)](#) [CREATE YOUR OWN BOX SET \(/BOOKS/DIVISARE/BOXSETS\)](#)
[CREATE YOUR OWN BULKPACK \(/BOOKS/DIVISARE/BULKPACKS\)](#)

DIVISARE BOOKS is a high-quality, independent editorial project, a modular publication dedicated to architecture documents each tackling a different topic: drawings collections, photographic surveys, visual essays, short writings and architectural projects.

DIVISARE

NICOLÒ GALEAZZI
COUNTRY HOUSE
BRICOLO FALSARELLA ASSOCIATI



[\(/books/156-nicolo-galeazzi-country-house-bricolo-falsarella-associati\)](#)