

[DIVISARE \(/\)](#)

[DOMINIQUE COULON & ASSOCIÉS \(/AUTHORS/2144706109-DOMINIQUE-COULON-ASSOCIÉS\)](#)
GYMNASIUM LES CLOSAUX

Pupil information and guidance centre, and staff accommodation.

PHOTOS BY [EUGENI PONS \(/AUTHORS/2144635104-EUGENI-PONS\)](#)



[\(/projects/332094/images](#)

[/5536803/zoom\)](#)

© EUGENI PONS

[ADD TO COLLECTION](#)

The building is located in a 1950s residential area in the Paris suburbs. The large sports hall is positioned at the far end of the site, giving the street a degree of amplitude and generating a public space which reinforces the building's status as a community facility. The volume of the accommodation is in keeping with the houses in the neighbourhood. The fragmentation of the programmes produces a displacement between the two volumes, offering glimpses of the central part of the site and opening up views towards the gardens.



[\(/projects/332094/images](#)

[/5536797/zoom\)](#)

© EUGENI PONS

[ADD TO COLLECTION](#)

This dispersion of volumes is contradicted by a continuous canopy which breaks up the perspective by obliquely distorting and twisting the vanishing lines. As it unfolds, it creates an invisible balance between the various points of tension the length of the canopy.



[/projects/332094/images](#)

[/5536816/zoom](#)
© EUGENI PONS

[ADD TO COLLECTION](#)

The displacement of the volumes expands the space and sets up contradictory vanishing lines. This open, dynamic shape alters the perception of limits and loosens the usual relationships between street and site. Architecture ceases to be a border between public and private spaces – the building allows glimpses of what is usually concealed.

A completely transparent gallery offers views from the street of the outline of the changing rooms. The contrasts produced by the matte, shiny and transparent surfaces accentuate the impression of an abstraction of space.



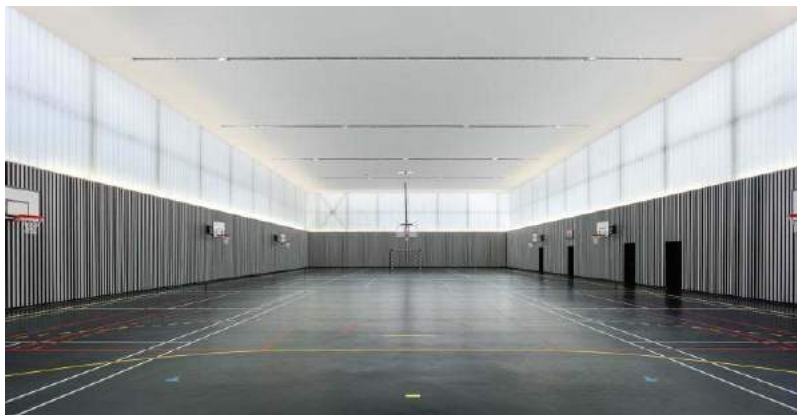
[/projects/332094/images](#)

[/5536817/zoom](#)
© EUGENI PONS

[ADD TO COLLECTION](#)

The large hall has natural lighting on the upper part of all four sides, with opalescent glass diffusing a uniformly soft light. The ceiling appears to be in a state of levitation, and the structure is absorbed to the point of disappearance by the double thickness of the glass. The lower part of the hall comprises spaced vertical slats; one side of the slats is grey. The hollows house the technical services and the black-coloured acoustic treatment. These gaps reinforce the impression of depth and lend thickness to the whole.

The grey concrete, the glass, and the shiny and matte surfaces are varied over the different spaces, creating a timeless atmosphere.



[/projects/332094/images](#)

[/5536798/zoom](#)
© EUGENI PONS

[ADD TO COLLECTION](#)



[/projects/332094/images](#)

[/5536814/zoom](#)
© EUGEN PONS

[ADD TO COLLECTION](#)



[/projects/332094/images](#)

[/5536815/zoom](#)
© EUGEN PONS

[ADD TO COLLECTION](#)



[\(/projects/332094/images](#)

[/5536796/zoom\)](#)
© EUGENI PONS

[ADD TO COLLECTION](#)



[\(/projects/332094/images](#)

[/5536809/zoom\)](#)
© EUGENI PONS

[ADD TO COLLECTION](#)



[\(/projects/332094/images](#)

[/5536812/zoom\)](#)
© EUGENI PONS

[ADD TO COLLECTION](#)



[\(/projects/332094/images](#)

[/5536830/zoom\)](#)
© EUGENI PONS

[ADD TO COLLECTION](#)



[/projects/332094/images](#)

[/5536837/zoom](#)
© EUGENI PONS

[ADD TO COLLECTION](#)



[/projects/332094/images](#)

[/5536847/zoom](#)
© EUGENI PONS

[ADD TO COLLECTION](#)



</projects/332094/images>

[/5536829/zoom](#)
© EUGEN PONS

[ADD TO COLLECTION](#)



</projects/332094/images>

[/5536850/zoom](#)
© EUGEN PONS

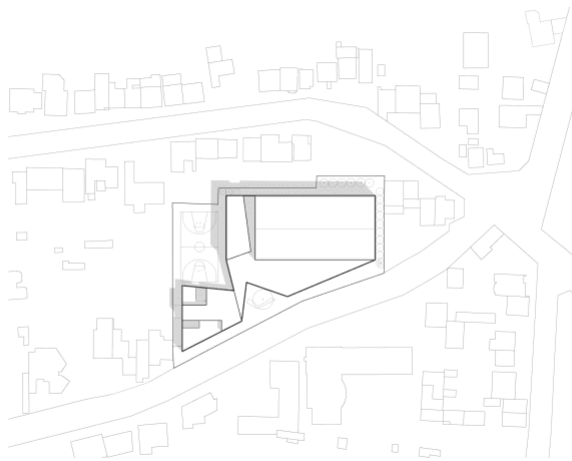
[ADD TO COLLECTION](#)



[/projects/332094/images](#)

[/5536838/zoom](#)
© EUGENI PONS

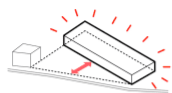
[ADD TO COLLECTION](#)



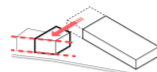
[/projects/332094/images](#)

[/5536856/zoom](#)
© DOMINIQUE COULON & ASSOCIÉS

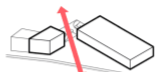
[ADD TO COLLECTION](#)



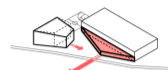
1. La salle de sport positionnée en fond de parcelle génère un espace public



2. Glissement des logements dans la continuité des maisons du quartier

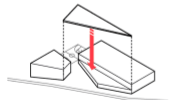


3. Le décalage des deux volumes met en relation la rue avec le cœur de la parcelle et le parking des vélos

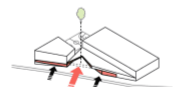


4. Déformation volumétrique qui s'adapte au programme

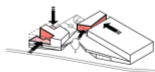
[/projects/332094/images](#)



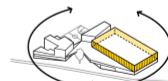
5. Un ouvert vient unir l'ensemble



6. Les façades déforment la perspective et ménagent un espace pour le végétal



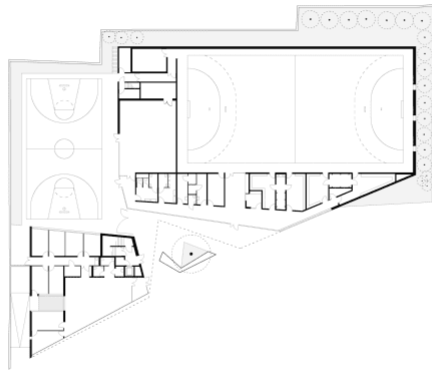
7. Les déformations géométriques libèrent les éléments qui captent la lumière et génèrent des terrasses



8. Le grand saut est écorché par ses 4 faces en porte haute.

[/5536873/zoom](#)
© DOMINIQUE COULON & ASSOCIÉS

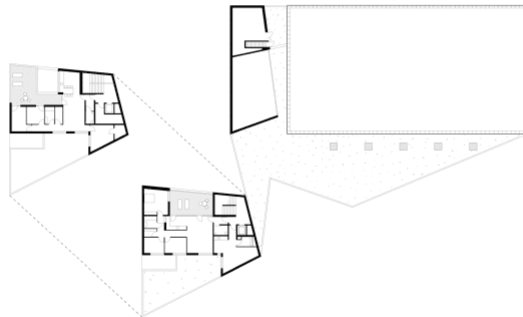
[ADD TO COLLECTION](#)



[./projects/332094/images](#)

[/5536857/zoom](#)
© DOMINIQUE COULON & ASSOCIÉS

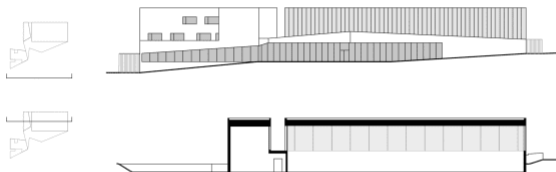
[ADD TO COLLECTION](#)



[./projects/332094/images](#)

[/5536855/zoom](#)
© DOMINIQUE COULON & ASSOCIÉS

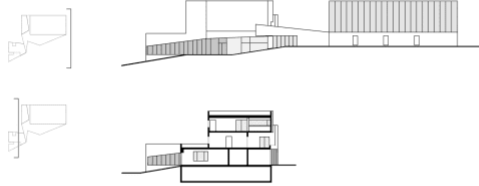
[ADD TO COLLECTION](#)



[./projects/332094/images](#)

[/5536853/zoom](#)
© DOMINIQUE COULON & ASSOCIÉS

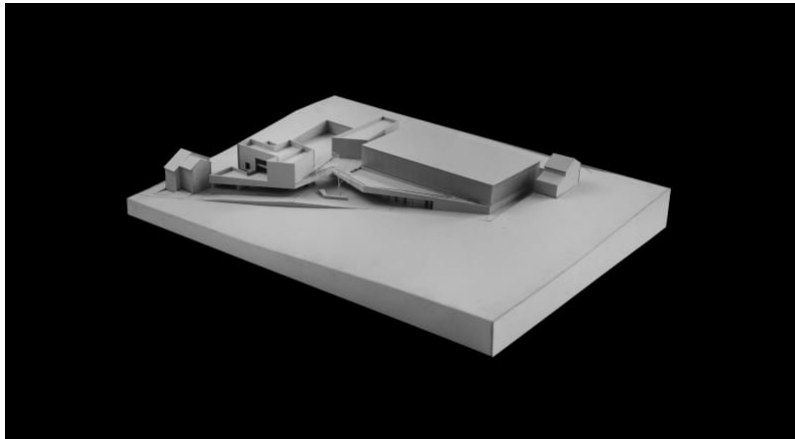
[ADD TO COLLECTION](#)



[\(/projects/332094/images](#)

[/5536854/zoom](#)
© DOMINIQUE COULON & ASSOCIÉS

[ADD TO COLLECTION](#)



[\(/projects/332094/images](#)

[/5536885/zoom](#)
© DOMINIQUE COULON & ASSOCIÉS

[ADD TO COLLECTION](#)

PUBLISHED ON DECEMBER 02, 2016

LOCATION
FRANCE - CLAMART

DESIGNER
[DOMINIQUE COULON & ASSOCIÉS \(/AUTHORS/2144706109-DOMINIQUE-COULON-ASSOCIÉS\)](#)

PROJECT YEAR
2016

PHOTOS BY
[EUGENI PONS \(/AUTHORS/2144635104-EUGENI-PONS\)](#)

CREDITS

DESIGN
ARCHITECTS : DOMINIQUE COULON
ARCHITECTES ASSISTANTS : DAVID ROMERO-UZEDA, OLIVIER POULAT, CHANG ZHANG, STEVE LETHO DUCLOS
COMPETITION : OLIVIER NICOLLAS
CONSTRUCTION SITE SUPERVISION : OLIVIER POULAT

LANDSCAPE
BRUNO KUBLER

STRUCTURES
BATISERF INGÉNIERIE

PHOTO
EUGENI PONS

ACOUSTIC
EURO SOUND PROJECT

LIGHTING
BET G.JOST

MEP
BET G.JOST

COST
E3 ÉCONOMIE

SAFE
BET G.JOST

CLIENT
CONSEIL DÉPARTEMENTAL DES HAUTS-DE-SEINE / PÔLE BÂTIMENTS ET TRANSPORTS / SERVICES DES TRAVAUX NEUFS ET RÉHABILITATIONS / NANTERRE